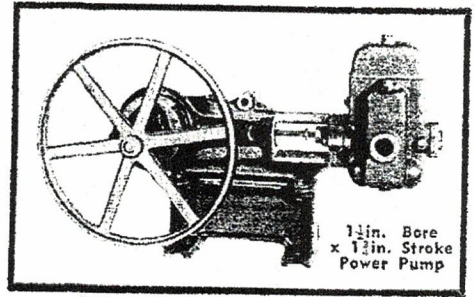
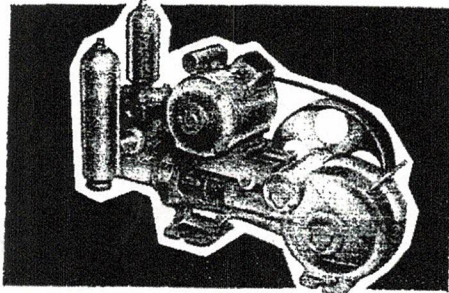


# SOUTHERN CROSS TOTALLY-ENCLOSED SELF-OILING POWER PUMPS . . .

*can pump water for all your needs!*



1 1/2 in. Bore x 1 1/2 in. Stroke Power Pump



2 1/2 in. Bore x 3 in. Stroke Power Pump

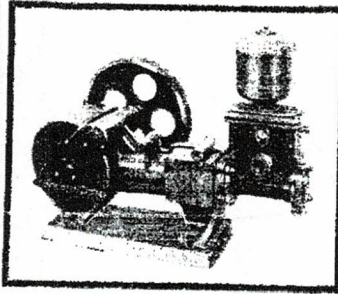
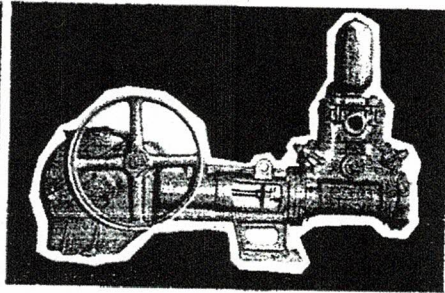


Fig. 3187—5 in. Stroke Power Pump



3 in. Bore x 4 in. Stroke Power Pump



Compact, silent running, self-oiling, totally-enclosed, and quality made, these pumps have all the features to give you every satisfaction.

They will pump from creeks, dams, wells or spear points, or from any surface water, and are ideal for fighting fires, watering gardens and lawns, irrigating crops such as beans, peas, bananas, filling overhead tanks and many other uses. SOUTHERN CROSS Power Pumps are particularly suited for pumping long distances or forcing water against high heads.

Being self-oiling and totally-enclosed, they run with little attention and will give a long life of continuous service.

Used with a SOUTHERN CROSS Automatic Water Pressure Unit, you can forget costly elevated tanks, avoid the stopping and starting of engine pumping units, save the tiresome checking of tank levels — and gain the convenience of constant pressure at all tap points.

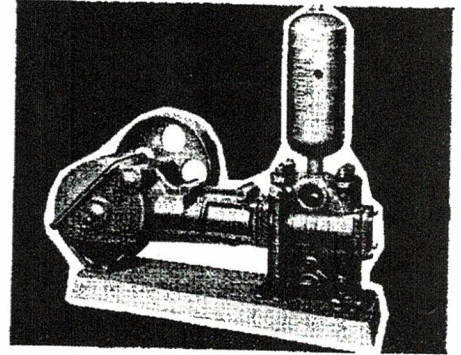


Fig. 2550 — 6 in. Stroke Power Pump

## PUMPING TABLES

Pump Mark	PUMP		SCREWED		Strokes per Minute	Pump Pulley R.P.M.	Gallons per Hour	H.P. REQUIRED AT PUMP PULLEY FOR HEADS OF:						
	Bore	Stroke	Suction	Discharge				50ft.	100ft.	150ft.	200ft.	250ft.		
Fig. 3215 Unit	1 1/2 in.	1 1/2 in.	1 in.	3/4 in.		230	290	1/3	1/3	1/2	2/3	1	1 1/2	2
	2 1/2 in.	3 in.	1 1/2 in.	1 1/2 in.	50	250	304	1/3	1/3	1/2	2/3	1	1 1/2	2
					70	350	426	1/3	1/3	1/2	2/3	1	1 1/2	2
					90	450	547	1/3	1/3	1/2	2/3	1	1 1/2	2
					110	550	668	1/3	1/3	1/2	2/3	1	1 1/2	2
	3 in.	4 in.	1 1/2 in.	1 1/2 in.	50	250	597	1/3	1/3	1/2	2/3	1	1 1/2	2
					70	350	834	1/3	1/3	1/2	2/3	1	1 1/2	2
					80	400	955	1/3	1/3	1/2	2/3	1	1 1/2	2
FIG. 3187 UNITS														
KH-E	2 1/2 in.	5 in.	1 1/2 in.	1 1/2 in.	40	210	390	150ft.	225ft.	300ft.	400ft.	500ft.		
					50	260	487	.6	.8	1.0	1.3	1.7		
					60	315	585	.7	1.0	1.3	1.7	2.1		
KH-F	5 in.	5 in.	1 1/2 in.	1 1/2 in.	40	210	576	.8	1.1	1.5	1.9	2.4		
					50	260	720	.9	1.4	1.8	2.4	3.1		
					60	315	865	1.1	1.7	2.2	2.9	3.7		
KH-G	3 1/2 in.	5 in.	2 in.	2 in.	40	210	797	1.0	1.5	2.0	2.7	3.4		
					50	260	996	1.3	1.9	2.5	3.4	4.2		
					60	315	1195	1.5	2.3	3.1	4.0	5.1		
KH-H	4 in.	5 in.	2 in.	2 in.	40	210	1051	1.4	2.0	2.7	3.6	—		
					50	260	1314	1.7	2.5	3.4	4.5	—		
					60	315	1576	2.0	3.0	4.0	5.3	—		
KH-J	5 in.	5 in.	2 1/2 in.	2 1/2 in.	40	210	1662	2.1	3.2	4.2	—	—		
					50	260	2077	2.7	4.0	5.3	—	—		
					60	315	2493	3.2	4.8	6.3	—	—		
FIG. 2550 UNITS														
AN-I	4 in.	6 in.	2 1/2 in.	2 1/2 in.	40	245	1238	1.6	2.4	3.1	4.2	5.2		
					50	305	1548	2.0	3.0	3.9	5.2	6.5		
					60	365	1857	2.4	3.6	4.7	6.3	7.8		
AN-K	5 in.	6 in.	3 in.	3 in.	40	245	1972	2.5	3.8	5.0	6.7	—		
					50	305	2464	3.2	4.7	6.3	8.4	—		
					60	365	2957	3.8	5.6	7.5	10.0	—		
AN-L	6 in.	6 in.	4 in.	4 in.	40	245	2866	3.7	5.5	7.3	—	—		
					50	305	3583	4.6	6.8	9.1	—	—		
					60	365	4300	5.5	8.2	10.9	—	—		

NOTE: Capacity under pressure will be reduced 5% to 10%.