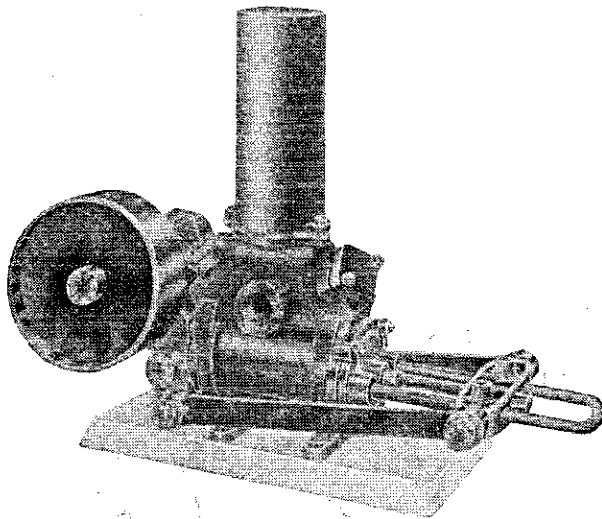




Geared Double Acting Power Pumps "X" Pattern



The "X" Pattern Geared Double Acting Power Pump arranged for belt drive and is employed for pumping f creeks, dams, shallow wells, etc.

The body of the pump is made of Cast Iron into which pressed a barrel of drawn brass tubing. The plunger rod of drawn brass bar and works in a screwed Gland Type Packing Box, the packing of which is made of Friction Disk packing. Two pump buckets are fitted to the plunger.

The valve seats are of gunmetal while the valves themselves are made of special quality rubber and are spring loaded for returning to their seats.

The gears are of cast iron and are machine cut. Connecting Rods are of Mild Steel with Whitmetal bushes fitted in the end.

The Main Bearings are long and are of cast iron. They are well lubricated with felt pads in large oil wells.

A 15-in. diameter x 3-in. face flat belt pulley is fitted standard. The maximum speed at which this pulley is driven is 233 r.p.m. which, with the gear ratio of 14 to 3 gives plunger speed of 50 double strokes per minute.

A large capacity Air Chamber is fitted, as standard, to the pump.

Four 6-in. x 3/8-in. Holding Down Bolts are supplied with each pump and are included in the price.

Special Feature

A special feature of these pumps is that a water by-pass is fitted to enable the engine to be started free from load. The by-pass is opened when the unit is being started so that some of the water is by-passed from the discharge back into the suction. Then when the engine has got up speed the by-pass is closed and the water is pumped along the discharge line.

Mark	Size Pump	Screwed for Suction	Discharge	Max. Capacity per Hour	Pulley Speed r.p.m.	Maximum Head	Power required for Max. Head	Weight c. q. lbs.	Price
XA	3in. x 5in.	1½ in.	1½ in.	700 gallons	233	230ft.	2 h.p.	1 2 9	£20 14
XB	4in. x 5in.	2 in.	1½ in.	1,220 gallons	233	140ft.	2 h.p.	1 3 2	£24 1
XC	5in. x 5in.	2½ in.	2 in.	1,920 gallons	233	95ft.	2 h.p.	1 3 3	£27 11

Where a more compact installation is required than is obtainable when using flat belt drive these pumps can be supplied coupled to a Southern Cross Engine by "V" Belts and mounted on a steel base. For further particulars see opposite page.

Double Acting Hand Pumps "X" Pattern

The "X" Pattern Southern Cross Double Acting Hand Pump is altogether superior to other hand pumps, as it is really a power pump adapted for hand purposes. The pump is the "X" Pattern Power Pump described above arranged for operation with a handle instead of pulley and connecting rods for power drive.

Whereas some other makes of pumps have ordinary cast iron cylinders the cylinder of this pump is fitted with a liner of seamless brass barrel. The plunger rod and packing nut are of brass, and the valve seats are of gunmetal. The valves are of rubber and are spring loaded for returning to their seats. The handle is made of good quality hardwood of convenient length.

Four 6-in. x 3/8-in. Holding Down Bolts are supplied with each pump and are included in the price.

The whole pump is particularly efficient and of first-class design and construction.

Mark	Size Pump.	Stroke.	Suction and Delivery Screwed for	Maximum Capacity per minute.	Weight.	Price.
XA	3in.	5in.	1½ in.	9 galls.	78 lbs.	£5 15 0
XB	4in.	5in.	1½ in.	15½ galls.	99 lbs.	£7 5 0
XC	5in.	5in.	2 in.	28 galls.	100 lbs.	£7 17 6

The Air Chamber illustrated on the pump is not part of the standard pump but, if required, it can be supplied for 35/- extra.

