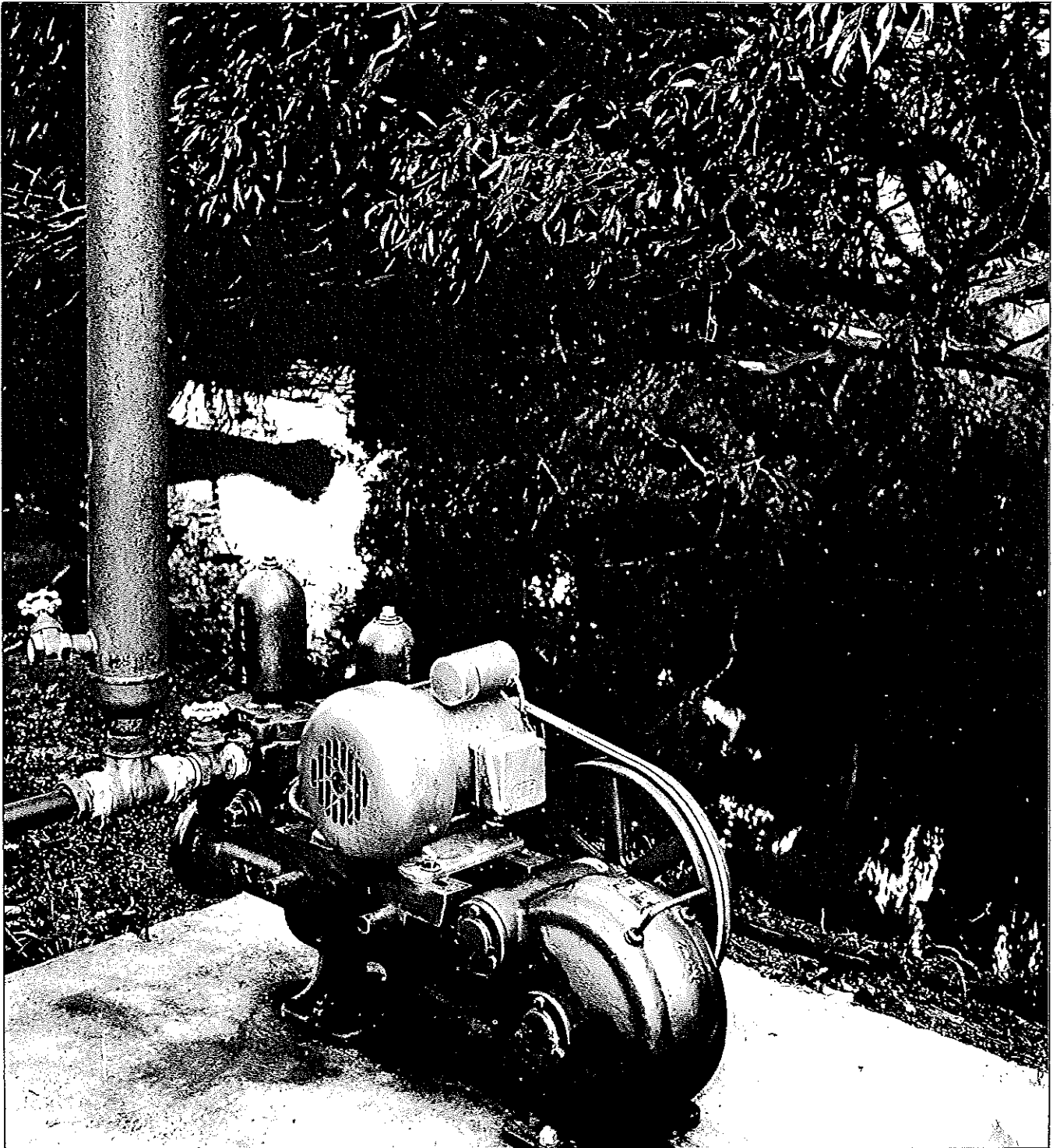




A Member of the McPherson's Limited Group

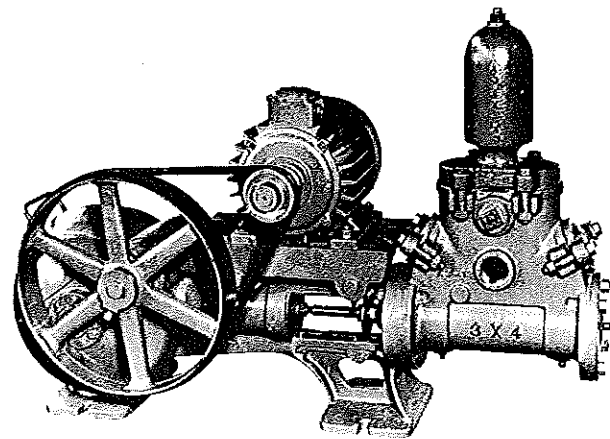
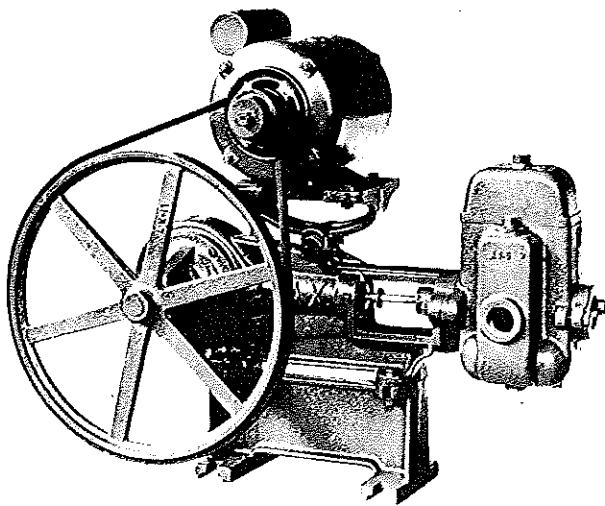
Melbourne    Sydney    Brisbane    Adelaide    Perth    Export  
(03)699 3588    (02)669 6366    (07)52 9100    (08)46 3071    (09)362 2022    (03)544 6666

## Ajax self-oiling piston pumps



Type A1½

Type A2 and A3



## Features A2 and A3

The Ajax Self-Oiling Piston Pump is a heavy duty, robust, reliable pump suitable for pumping long distances and against high heads. The simplicity and strength of the components enables the piston pump to run for long

periods without attention, also the design allows for easy service in the field by inexperienced operators. There are many examples of original pumps supplied 50 years ago which are still in operation, some under

exacting and rigorous conditions.

Piston pumps suitable for operation against heads of up to 250 feet. Will operate on long suction lines and spearpoints.

## Detailed parts list A2 and A3

Parts list for A1½ available on application

<b>Piston assembly — P</b>		Pinion shaft woodruff key	73	Valve cover	16
Piston plate	102	Gear setscrew locknut	71	Air chamber	15
Centre plate	101	Piston rod locknut		Stuffing box	14
Piston cup leather	90	crosshead end	70	Cylinder head	13
		Stuffing box stud nut — A2	69	Cylinder body	12
<b>Valve assembly — V</b>		Cylinder head stud nut — A3	69	Keeper plate	11
Valve rubber	89	Valve bolt nut	69	Loose pulley**	10
Valve stud	29	Oil baffle metal thread screw*	68	Fast pulley	9
Valve seat	28	Fast pulley setscrew	67	Crosshead	8
Valve plate	27	Gear setscrew	66	Connecting rod	7
Valve spring	26	Keeper plate setscrew	65	Pinion shaft short bearing	6
		Bearing setscrew	64	Pinion shaft long bearing	5
Collar setscrew**	98	Loose pulley grease cup**	62	Gear shaft bearing	4
Deflector socket setscrew	97	Valve cover bolt	61	Gear	3
Vacuum chamber connection	95	Gear case baffle*	51	Gear case cover	2
Piston rod locknut — piston end	92	Pulley collar**	48	Base	1
Gland packing	91	Oil deflector*	47		
Bearing gasket	85	Pinion	43		
Cylinder gasket	84	Crosshead pin	42		
Valve cover gasket	83	Pinion shaft	41		
Cross head split pin	80	Gear shaft	40		
Air & vacuum chamber plug	79	Piston rod	30		
Pipe connection plug	78	Deflector	25		
Cylinder plug	77	Cylinder liner stud	24		
Base plug	76	Cylinder liner	23		
Stuffing box bolt — A2	75	Connecting rod bush	22		
Stuffing box stud — A3	75	Gland sleeve	21		
Cylinder head bolt — A2	74	Vacuum chamber	18		
Cylinder head stud — A3	74	Gland nut	17		

\* Not shown

\*\* Not fitted as standard, supplied on request only

# Pump specifications — general

## Lubrication

The pump is entirely self-lubricating. Oil is carried up from the base (1) by the driving gear (3) and is distributed to every working part, from where it returns to the reservoir.

## Air chamber (15)

To give a smooth flow to the discharge line a cast iron air chamber is provided. It is free of any pipe connections and by slacking four bolts can be removed to disclose the discharge valves.

## Vacuum and priming chamber (18)

This chamber is provided for the suction line and is so constructed that a division in the centre of the chamber holds the water on a level above the discharge valves. This ensures that the pump retains its prime.

## Cylinder body (12)

One substantial close grained iron

casting forms the cylinder and valve chambers and is fitted with removable brass liner (23). The liner is attached to the cylinder head (13) and can be easily removed by means of withdrawal bolts. Suction and discharge valve assemblies (v) are accessible for inspection without removing pipe connections. Suction and discharge may be connected to either side of the pump.

## Valves

The valves are of the well proven rubber disc type on bronze seats with bronze stems and springs.

## Piston (P)

The piston is fitted with leather cups with cast iron centre and backing plates. The assembly is fitted to the shouldered piston rod and positively locked in position with two nuts.

## Piston rod (30)

High tensile manganese bronze is

used to resist wear and corrosion. A large deflector (25) is fitted to keep water out of gear case. The piston rod and piston can be removed without dismantling the power end of the pump by withdrawing it from the cross head (8) having slackened the lock nut (70).

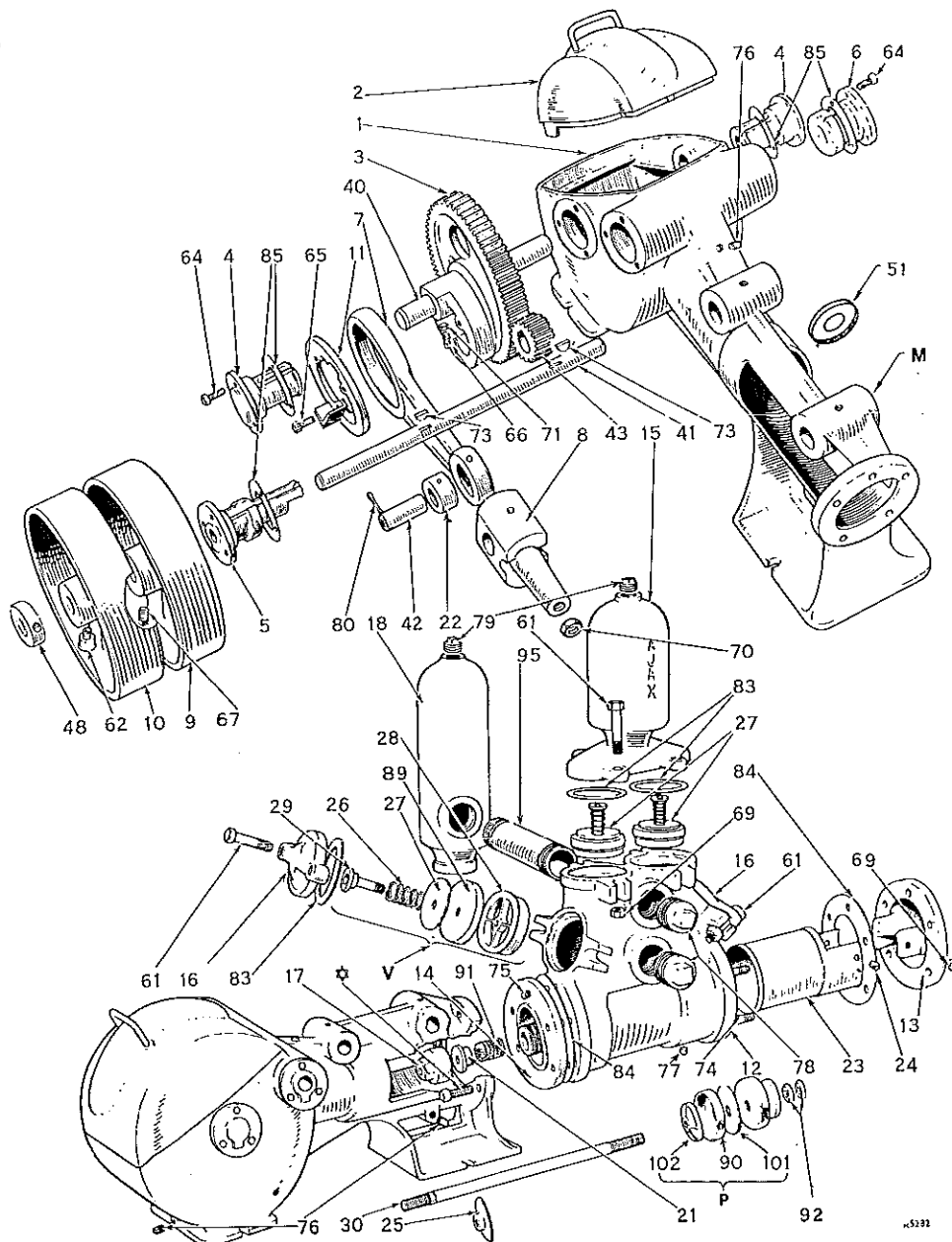
## Power end

The gear case, oil reservoir and cross head guide are all integral in one iron casting and form the base of the pump. The eccentric bearing of the connecting rod (7) is of exceptionally large diameter to minimise wear. Gear and pinion are supported on both sides by large cast iron bearings (4, 5, 6). Gear case baffle (51 not shown) is fitted to protect the lubrication system from dust and water; gear ratio 5 to 1.

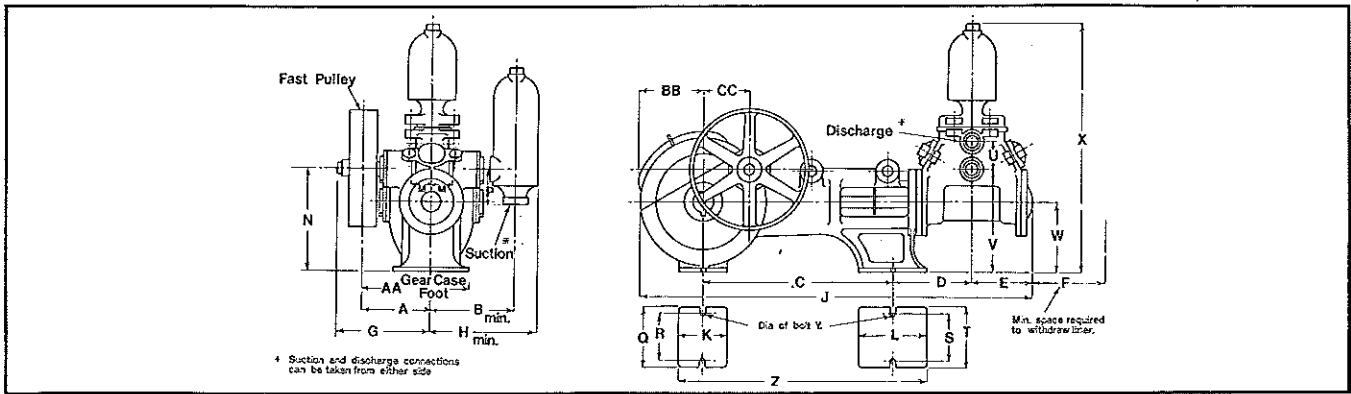
## Motor rail mounting bosses (M)

Are provided for convenient fitting of the motor rails.

A2 and A3



\* NOT FITTED



## Dimensions are in inches.

Type	Suction and Discharge Size	A	B	C	D	E	F	G	H	J	K	L	M	N	P
A1½	1 and ¾ in.	5¼	—	8⅜	5½	3½	3	6⅜	3½	26½	2⅛	2⅛	—	8¾	—
A2	1¼ in.	6	5⅜	15⅝	7⅞	5¾	8	7½	7⅜	34½	4½	5½	2⅛	8⅜	3½
A3	1½ in.	7¼	6⅞	20	8⅝	6⅝	9¾	8⅞	8⅞	42½	6½	6½	2½	10½	3½

Type	Q	R	S	T	U	V	W	X	Y	Z	AA	BB	CC	Pulley Dia.	Width	Shaft
A1½	5⅞	4⅜	4⅜	5⅞	2¼	8⅞	8⅝	15¼	⅜	10½	8	4	0	14	1	13/16
A2	8½	7	4½	6	2⅝	8¾	5½	23½	½	20⅝	10¼	5⅞	4½	12	2½	1
A3	10	8½	6½	8	3½	11⅞	7	27½	½	26½	12¼	7⅞	4⅞	14½	2½	1⅞

## Performance

Pump	Cylinder Dia. Inch	Stroke Inch	Speed rpm	Capacity g.p.h.	Recommended Motor hp				
					50 ft	100 ft	150 ft	200 ft	250 ft
A1½	1½	1¾	200	300	½	½	½	—	—
					½	½	¾	¾	¾
					½	½	¾	¾	¾
					½	¾	¾	¾	¾
					½	¾	1	1	1½
A2	2½	3	250	300	½	½	¾	¾	¾
					½	½	¾	¾	¾
					½	¾	¾	¾	¾
					½	¾	¾	¾	¾
					½	¾	1	1	1½
A3	3	4	250	590	½	¾	1	1	1½
					¾	1	1	1½	1½
					¾	1	1	1½	2
					¾	1	1½	1½	2
					¾	1	1½	1½	2

### Other Sizes: Information on enquiring.

**Small piston pump, Type A1½**  
Ideal for home water supply from creeks, wells, spearpoints, etc., for filling overhead tanks, fire-fighting, watering gardens, tennis courts and greens with hoses or sprinklers.

**Vee belt driven from motor**  
Motor mounting substantial slotted cast iron motor rails can be supplied. Almost any size of motor can be conveniently mounted on top of the pump, making the unit completely self-contained. The slotted rails provide adjustment for belt-tensioning.

**Note on performance table**  
The hp figures given in the table are sufficient to start the pump under conditions equivalent to 75% the stated head. If starting conditions exceed 75% the stated head the next size motor should be used. Performances marked thus \* obtainable with Series "G" pumps.

**Note:** Due to research and development, products are continually improved. This may lead to the specifications being changed without notice. Commonwealth law and certain other legislation of States and Territories of the Commonwealth of Australia render incapable of exclusion restriction of modification certain statutory conditions and warranties implied in consumer contracts. Save as aforesaid Ajax Pumps Pty. Ltd. accepts no liability for any loss or damage either direct or consequential arising out of or in relation to the use or application of the information or products referred to herein. Any goods not of the Company's manufacture are sold with such warranty as is specified by the manufacturer.

**Guarantee:** The Company undertakes that the goods manufactured by the Company shall be of sound commercial quality in materials and workmanship. The Company will make good or replace parts which, under proper use, may appear defective within six months after delivery to the Purchaser and which are proved to be defective due solely to the use of defective materials or bad workmanship, provided always that such defective parts are promptly returned free to the Company's works, unless otherwise arranged, and any defective parts replaced are to be the Company's property. The repaired or new parts will be delivered free to any site where regular commercial transport is available. Any goods not of the Company's manufacture are sold with such warranty as is specified by the manufacturer.

<b>Victoria</b> 6 Buckhurst Street South Melbourne, Vic. 3205 Telephone: (03) 699 3588 Telex: 139654	<b>Western Australia</b> 53 Burswood Road Victoria Park, W.A. 6100 Telephone: (09) 362 2022 Telex: 95009	<b>South Australia</b> 53-55 Ormond Street Hindmarsh S.A. 5007 P.O. Box 84, Welland S.A. 5007 Telephone: (08) 46 3071 Telex: 82390
<b>Queensland</b> 3 Helen Street P.O. Box 928 Fortitude Valley, Qld. 4006 Telephone: (07) 52 9100 Telex: 41710	<b>New South Wales</b> 6 Durdans Avenue Rosebery N.S.W. 2018 P.O. Box 352 Mascot 2020 Telephone: (02) 669 6366 Telex: 20534	<b>Head Office and Manufacturing</b> 217 Sunshine Road Tottenham, Vic. 3012 Telephone: (03) 314 0611 Telex: 32771

**Local distributor**